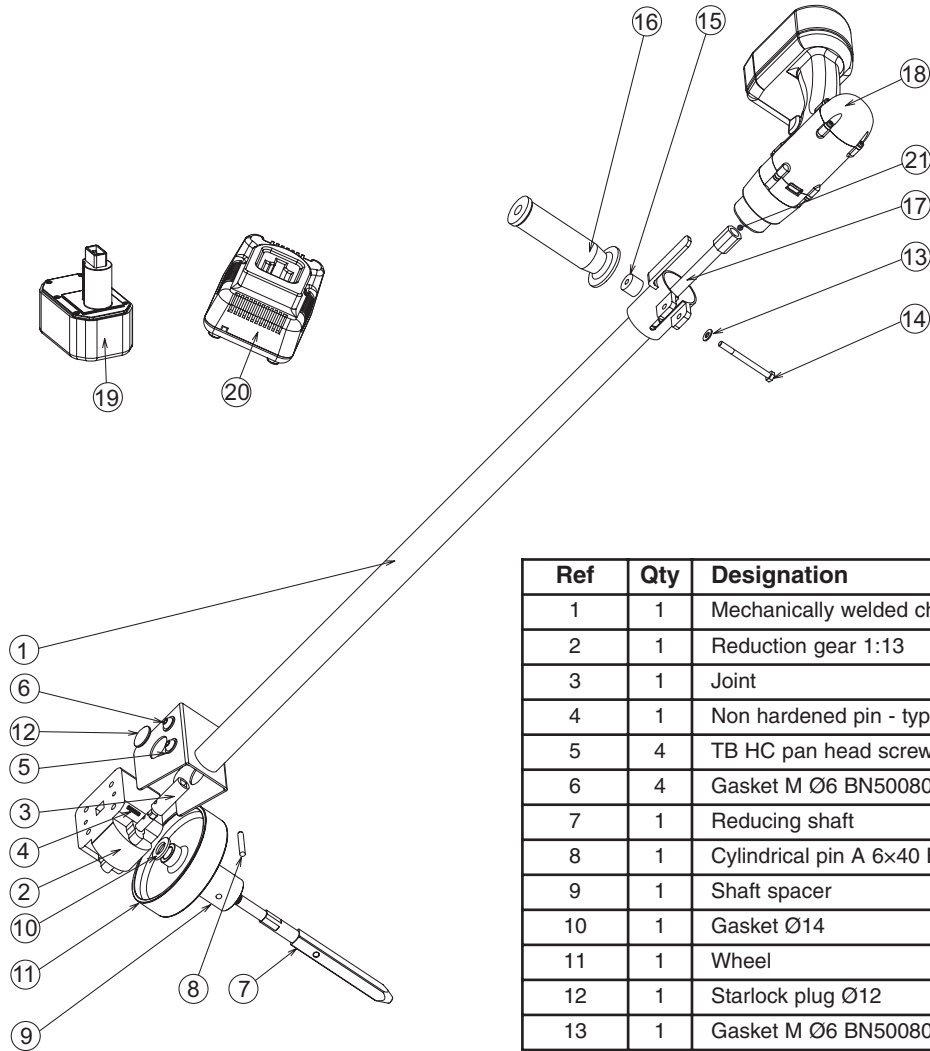


MOTORISED CRANK FOR TRANSVERSAL BAR POOLS COVERS

ASSEMBLY AND OPERATING INSTRUCTIONS

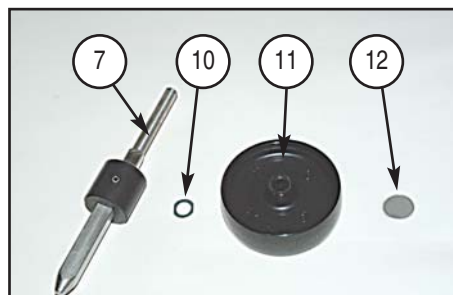
To be read carefully and kept for future reference



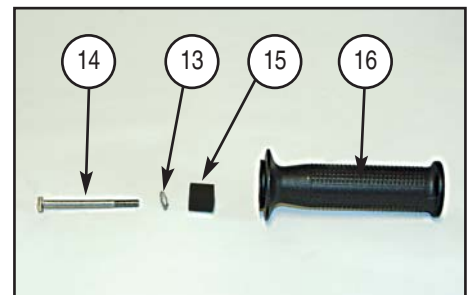
Ref	Qty	Designation
1	1	Mechanically welded chassis
2	1	Reduction gear 1:13
3	1	Joint
4	1	Non hardened pin - type B 4x16 BN684 DIN7
5	4	TB HC pan head screw M8-12
6	4	Gasket M Ø6 BN50080 NFE 25.514
7	1	Reducing shaft
8	1	Cylindrical pin A 6x40 BN1351 DIN7343
9	1	Shaft spacer
10	1	Gasket Ø14
11	1	Wheel
12	1	Starlock plug Ø12
13	1	Gasket M Ø6 BN50080 NFE 25.514
14	1	Screw H Gr A M6 x 70mm BN623 DIN931
15	1	Spacer
16	1	Hand grip
17	1	Drive shaft
18	1	Cordless drill 984 DC
19	2	Battery
20	1	Charger
21	1	Thread lock



Pre-assembled mechanism

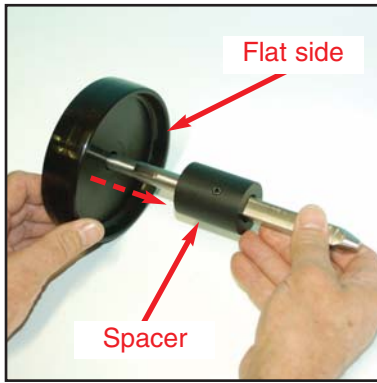


Reducing drive components

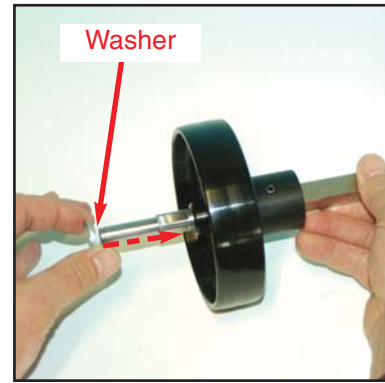


Hand grip components

ASSEMBLY

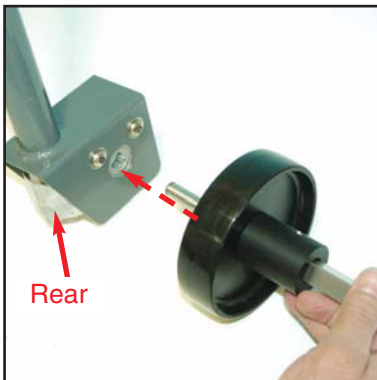
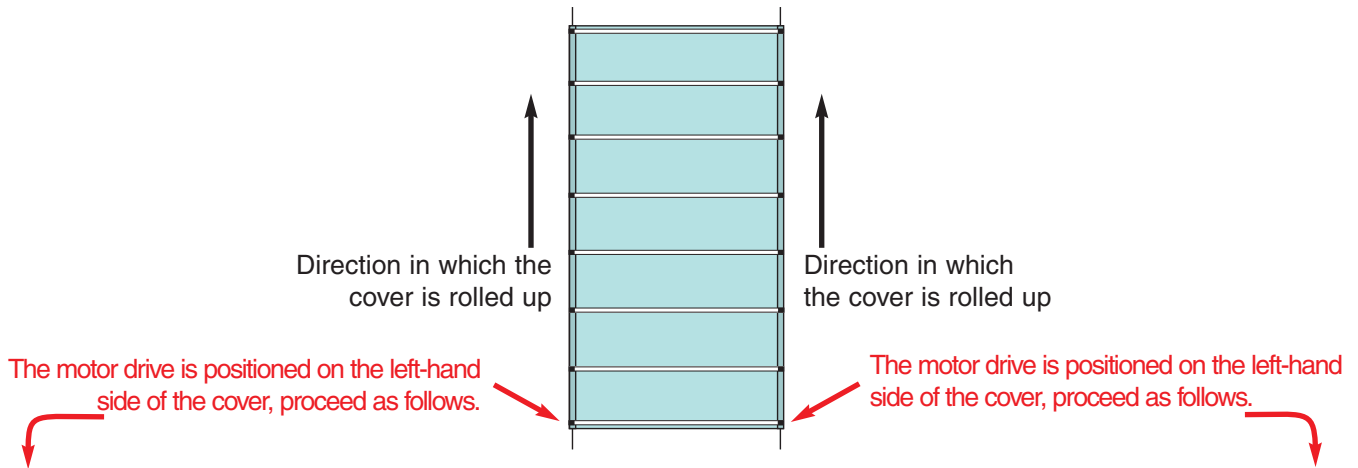


Thread the wheel onto the reducing shaft taking care to orient the flat side of the wheel against the spacer.



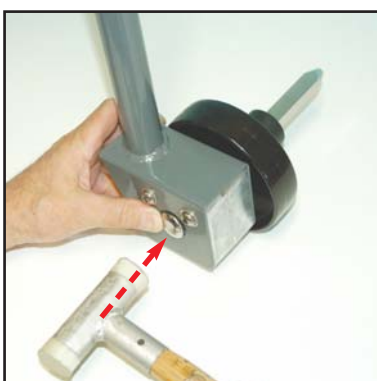
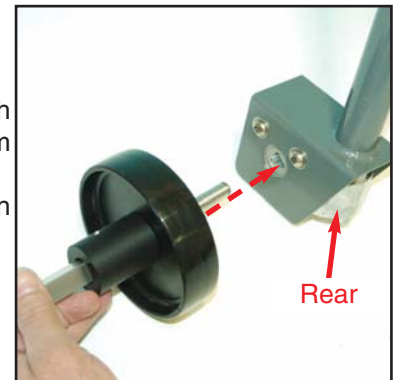
Slide the gasket onto the shaft snug against the wheel.

Decide on the initial position of the motor (on the left or right hand side of the cover), and continue with the assembly taking this position into consideration.



Thread the shaft through the reduction gear from right to left. The rear of the reduction gear is rounded.

Thread the shaft through the reduction gear from right to left. The rear of the reduction gear is rounded.



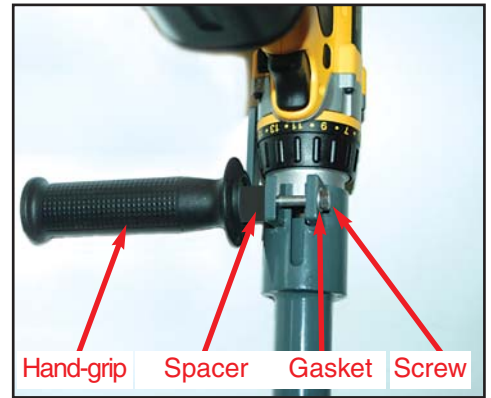
Using a mallet, clip the Starlock plug onto the groove at the end of the shaft to lock the assembly together.



ASSEMBLY OF THE HAND GRIP

Attach the hand grip under the motor. **The hand-grip should be on the opposite side to the wheel.** The assembly opposite illustrates the position of the hand-grip when the motor is used on the left-hand side of the cover.

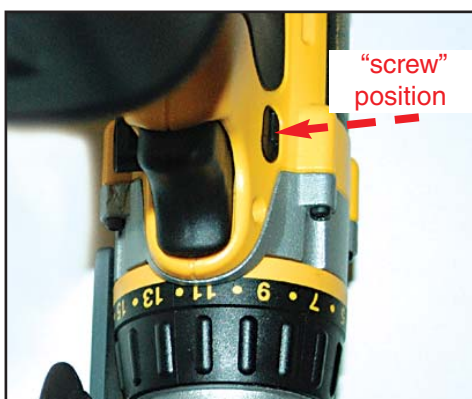
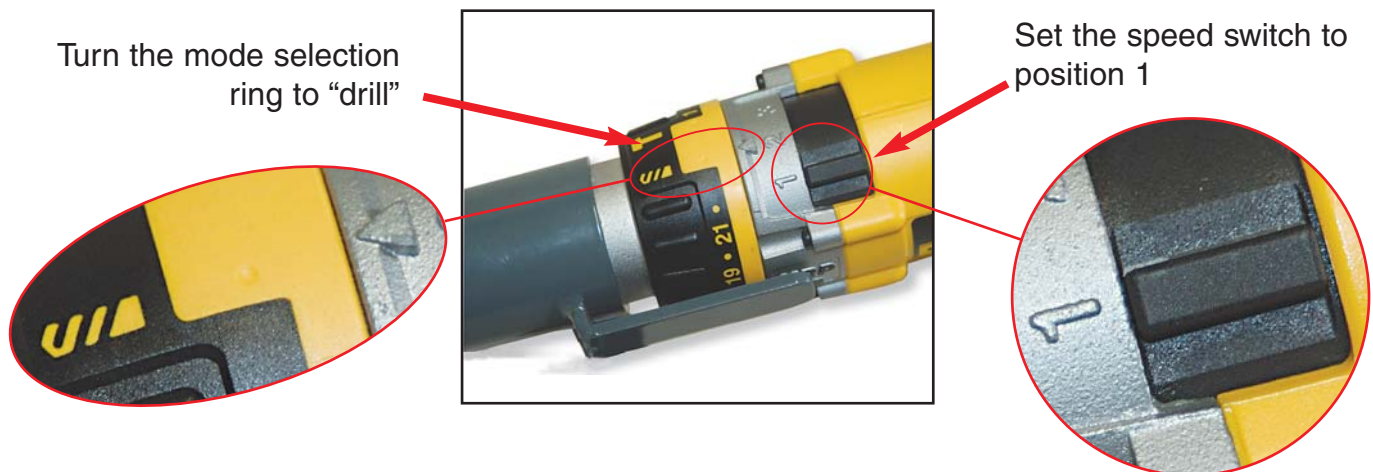
Insert a spacer (ref 14) between the hand-grip and its support and then fix the hand grip in position using the screw H Gr A M6 x 70mm and gasket (ref 13 and 12 page 2).



TO USE THE MOTOR DRIVE SYSTEM ON THE OPPOSITE SIDE, TAKE IT APART BY FOLLOWING THESE INSTRUCTIONS IN THE REVERSE ORDER AND THEN REASSEMBLE FOLLOWING THE INSTRUCTIONS FOR THE OPPOSITE SIDE (PAGE 3).

MOTOR SETTINGS

Implement the settings set out below:



Push the the rotation inverter to the "screw" position (as far left as possible)

THE SETTINGS INDICATED ABOVE SHOULD NEVER BE ALTERED

THE MOTOR DRIVE SYSTEM IS READY TO BE USED

CHARGING THE BATTERIES

The motor drive system comes with 2 battery packs. The autonomy of the battery pack varies according to cover dimensions and the frequency of use (a rough rule of thumb - with a fully charged battery it should be possible to roll up a 9 x 4m cover 10 times). Each battery pack must be charged before being used for the first time. The battery pack takes approximately one hour to charge fully. To charge the battery pack, insert it into the charger taking care to push the pack home without forcing. The red indicator light will start to flash. After about 1 hour the indicator light stops flashing, it is lit continually indicating that the battery pack is fully charged. The charger then automatically switches to compensation mode. After approximately 4 hours it finally enters charge conservation mode. The battery pack may be removed at any time or may be left plugged into the charger indefinitely. In the event of a problem during charging, the indicator light will blink rapidly. Remove and reinsert the battery pack or try another.

The two battery packs must be used alternately. Battery packs stored without being used deteriorate rapidly.

Important :

- Refrain from charging battery packs at an ambient temperature of less than 4 °C or more than 40 °C. Recommended temperature for charging is around 24 °C.
- Only DEWALT type DE9092 battery packs should be used.
- Please dispose of used battery packs responsibly.

The battery cover

A cover protects the battery terminals when the battery is not in use or being charged. If the cover is not in place, contact with a metal object could provoke a short circuit, start a fire and/or damage the battery pack.

- Remove the protective cover before inserting the battery pack into the motor or the charger.
- Replace the protective cover as soon as the battery pack is removed from the motor or the charger.
- Check that the protective cover is in place before storing or transporting a battery pack.

Compensation mode

Compensation mode conserves the battery packs' maximum capacity. This function should be used either every week or once every 10 charge cycles. .

- Start charging the battery pack as described above.
- When the light stops flashing, leave the battery pack in the charger for approximately 4 hours.

TECHNICAL DATA			
Motor		Charger	
Voltage	14.4 volts	Mains voltage	230 V
Fuse	10 A	Charge time	60 min approx
Battery packs NicD - DE9092		Weight	0.4 kg
Voltage	14.4 V	Noise	
Capacitance	2.4 Ah	Sound pressure	87 dB(A) at the operator's ear
Weight	0.7 kg	Sound power	100 dB(A)

USING THE MOTORISED CRANK

The motorised crank should only be used to roll up the cover. The cover should be rolled out by pulling on the transversal strap.

- Push the motor drive system fully into the square opening on the end bar.
- Start the motor. Hold the chassis vertical, at least during the first few revolutions, to keep the reduction gear from rubbing against the ground. Control the speed by varying the pressure on the motor trigger.
- Ensure that the cover rolls up as evenly as possible.



GUARANTEE CONDITIONS

THE BAR COVER MOTORISED CRANK (AVAILABLE AS AN OPTION) IS GUARANTEED ONE YEAR, THIS GUARANTEE EXCLUDES THE BATTERY PACKS.